

Figure 1. Scanning electron micrographs of etched fresh surface of kaolinite-illite-quartz bodies fired at 1250°C illustrate the overall microstructure, solution rim of quartz grains (a, b, c), K feldspar grains and porosity (d, e, f). Scale bar a, b, c = 10µm, d, e, f = 10µm, 100µm, 10µm

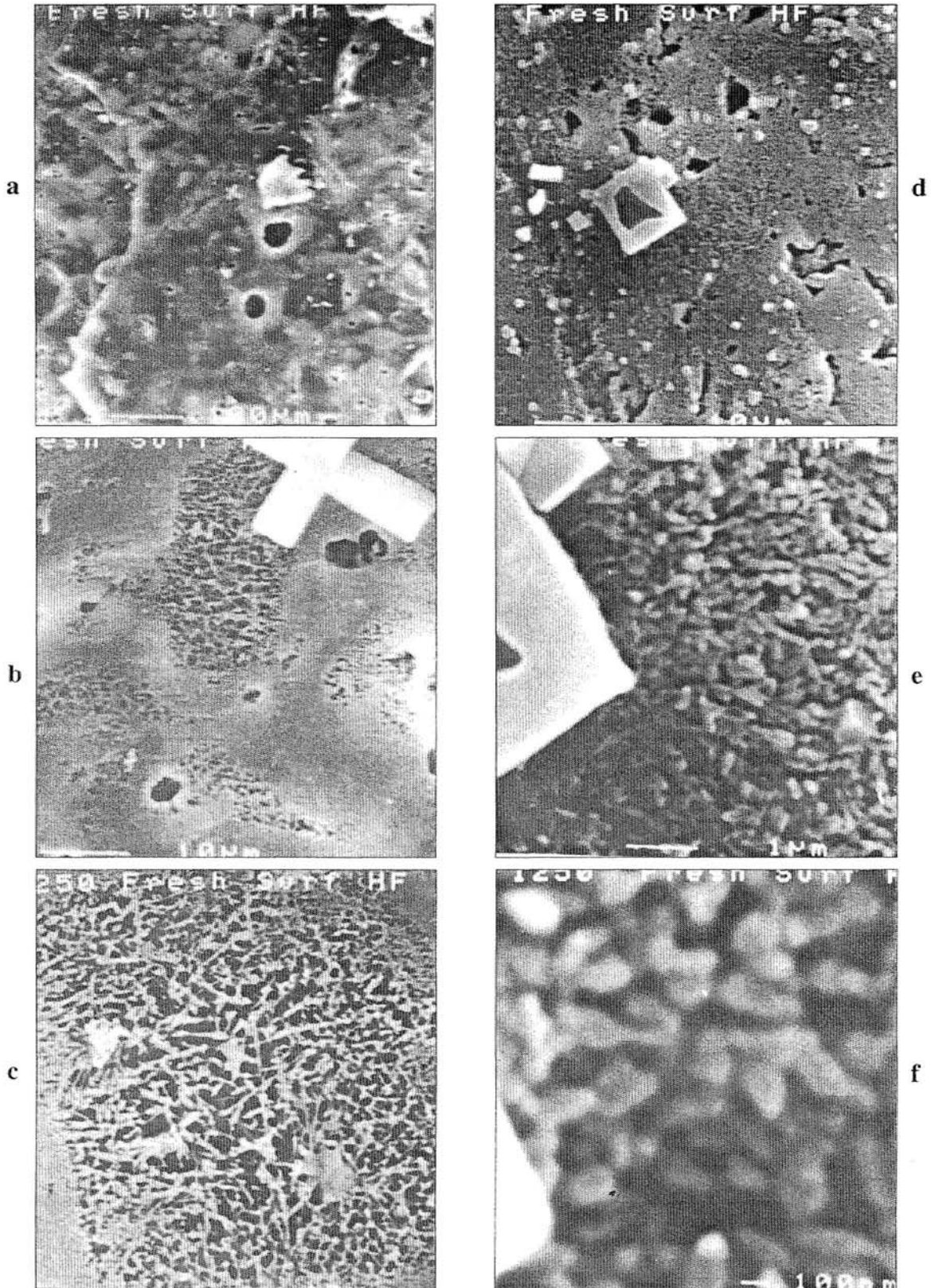


Figure 2. Scanning electron micrographs of etched fresh surface of kaolinite-illite-quartz bodies fired at 1250°C. Illustrate the existence of primary (a, b, c) and secondary (d, e, f) mullite within amorphous /glassy matrix. Scale bar a, b, c = 100µm, 10µm, 10µm, d, e, f = 10µm, 1µm, 100nm

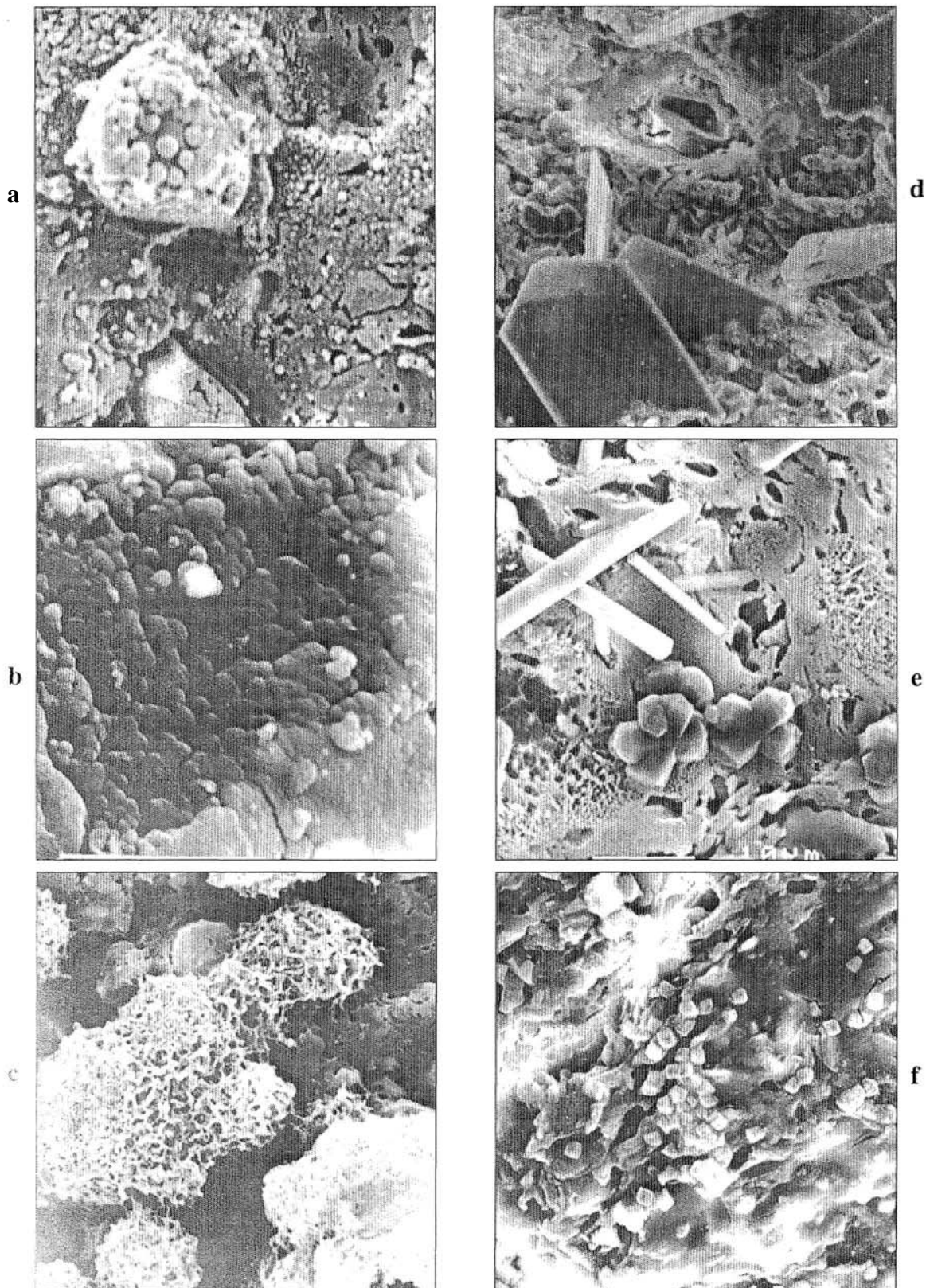


Figure 3. Scanning electron micrographs of etched fresh surface of Ca-Na and K feldspar bodies fired at 1250°C illustrate the existence of Ca rich spherical humps (a, b, c) and K rich crystals of new formation (d, e, f) Scale bar a, b, c = 10 μm, d, e, f = 10 μm

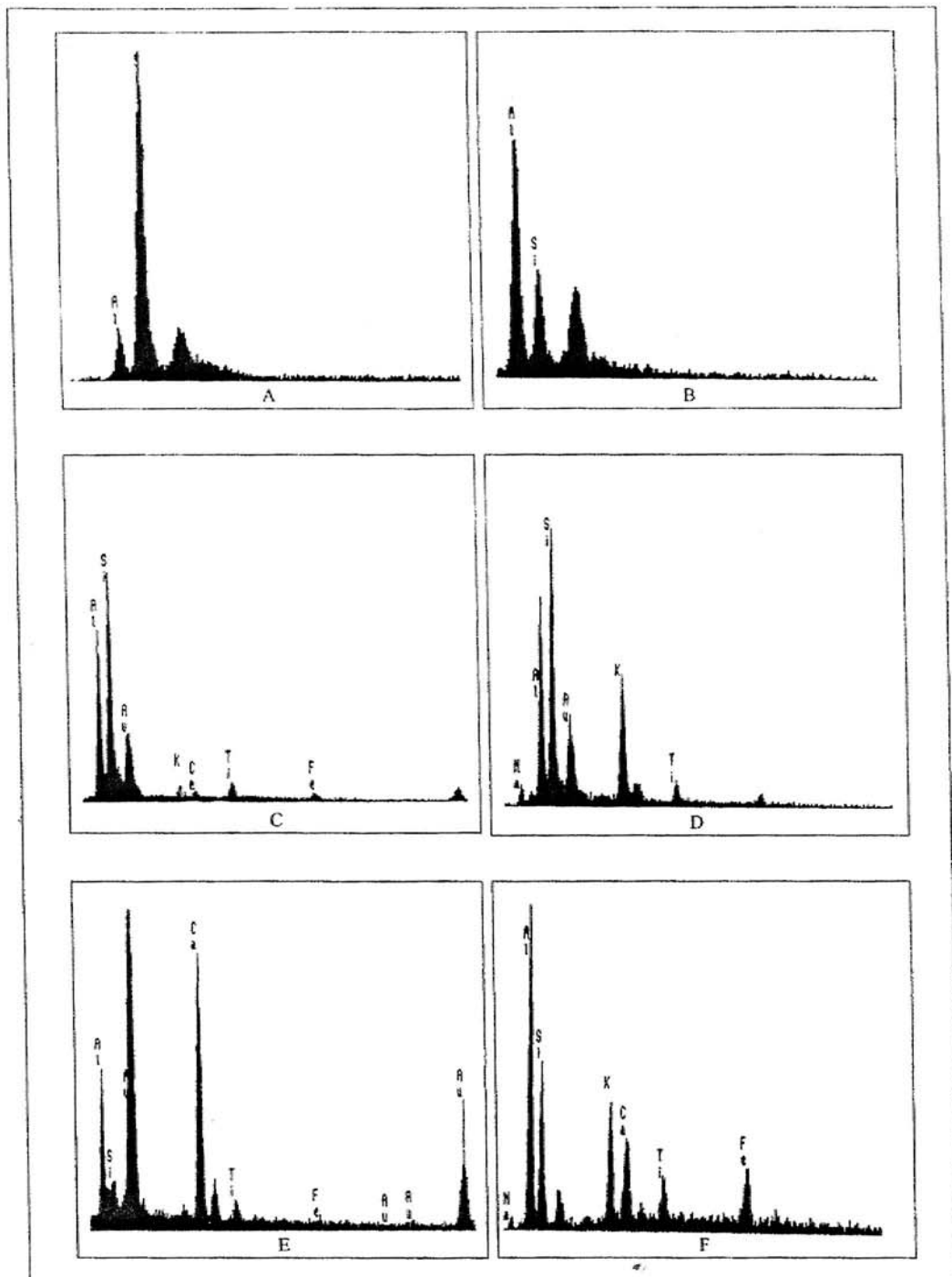


Figure 4. Scanning and stationary beam mode of EDX analysis spectras of secondary mullite primary mullite, amorphous /glassy phase and new formation crystals.